


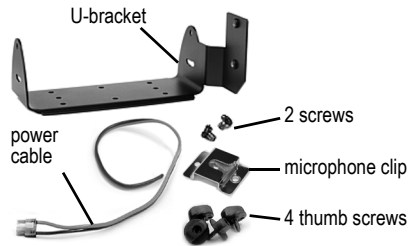
TMAA03-06/TMAA03-13 U-bracket Kit Installation Instructions

Introduction

The TMAA03-06 U-bracket kit (for 25 W radios) and the TMAA03-13 U-bracket kit (for 30–50 W radios) are used for desktop installation of mobile radios. The U-bracket can be attached to the TMAA13 power supply or any other even surface.

The U-bracket kits are supplied with an 8 foot (2.5 m) power cable, four thumb screws to attach the mobile radio and a microphone clip (with screws and washers).

-  The connector plug on the power cable differs for 25 W and 30–50 W mobile radios. Ensure that you have the U-bracket kit that is appropriate for your radio.



Installation

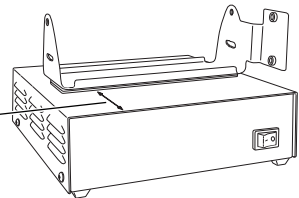
Mounting the U-bracket to the power supply

The recommended position for the U-bracket is on the top surface of the power supply, 2.4 inch (60 mm) from the front edge.



Caution Be careful when handling solvents. Follow the manufacturer's precautions and directions for use.

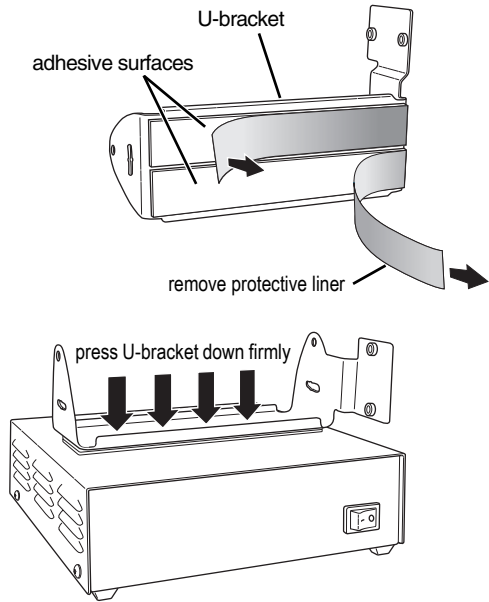
2.4 inch
(60 mm)



- 1 Use a solution of isopropanol and water (50/50) to remove any oil or dirt from the top surface of the power supply.

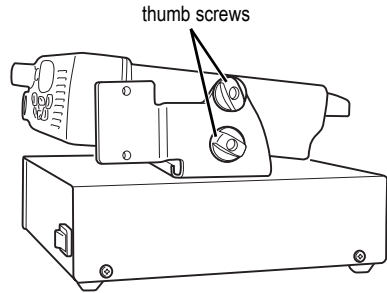
To ensure maximum bond strength, the temperature of both the power supply and the U-bracket should be above 68°F (20°C).

- 2 Remove the liners that protect the adhesive surfaces on the bottom of the U-bracket.
- 3 Position the U-bracket on the power supply and press down firmly along the whole length of the U-bracket. Maximum bond strength will be achieved within 72 hours.



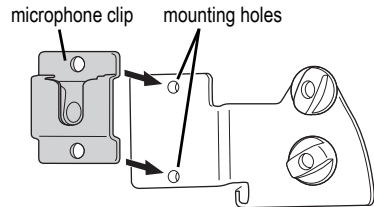
Mounting the radio to the U-bracket

- 1 Position the radio in the U-bracket so that the mounting holes in the U-bracket line up with the holes in the radio chassis.
- 2 Fasten the radio with the four thumb screws.



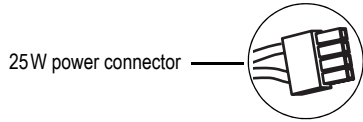
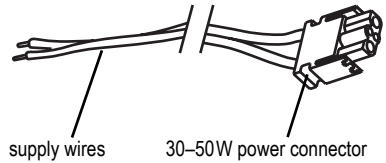
Mounting the microphone clip

- Mount the microphone clip to the side of the U-bracket with the supplied screws.



Connecting the power supply to the radio

- 1 Disconnect the power supply from the mains supply.
- 2 Connect the power cable's positive wire (red) to the positive terminal (red) and connect the negative wire (black) to the negative terminal (black) of the power supply.
- 3 Re-connect the power supply to the mains supply.



To complete the installation

- 1 If an external speaker is required, connect it as described in the installation documentation for the speaker.
- 2 Connect the antenna to the radio.
- 3 Connect the power supply to the mains supply and switch it on.
- 4 Make sure that the power indicator in the switch illuminates. If the indicator fails to light up, check the connection and mains power outlet. If the problem persists, contact your Tait radio provider.
- 5 Turn on the radio and make sure that it operates satisfactorily, as described in the user documentation for the radio.

More Information

Refer to your radio provider for more information about this product.